

www.newheavencity.com

NEW
HEAVEN
CITY

A FIVE STAR RESIDENTIAL COMPLEX

PROJECT OFFICE

Sector -16, Uttara
Dhaka - 1230
Cell: +880 1701666631
+880 1701666632

DHAKA OFFICE

Apt: 3N, House: 449/1
Road: 8, DOHS Baridhara
Baridhara, Dhaka -1206
Tel: +88028411411
Cell: +880 1701666634
+880 1701666635

USA OFFICE

Dr. Jakey Patwari
49-20, 43 Avenue
Suite 1B, Woodside
NY 11377, USA
Tel: +1 (646) 7186072570

KSA OFFICE

Hakimul Islam
Post Box 9601, Abraj Al Bait
Al Marwa Rayhaan by Rotana
Makkah, KSA
Tel: +966553911327

A JOINT VENTURE PROJECT OF
UTTARA HEAVEN PROPERTIES BANGLADESH LTD.
&
NEW HEAVEN COMPANY OF NEW YORK INC.
RAJUK design approval no. :25,39,0000,099,33,119,17,128

CLOSER TO PARADISE AND
THE PLACE YOU CALL HOME



NEW
HEAVEN
CITY

A FIVE STAR RESIDENTIAL COMPLEX

A JOINT VENTURE PROJECT OF
UTTARA HEAVEN PROPERTIES BANGLADESH LTD.
&
NEW HEAVEN COMPANY OF NEW YORK INC.







NEW HEAVEN CITY

NEW HEAVEN CITY



LOCATION MAP

KEY DISTANCE

-  Metro Station 0.5 KM
(Proposed MRT#6 Line)
-  Airport Rail Station 6 KM
-  Int. Airport 6 KM
-  Boat Club 3 KM

SOCIAL INFRASTRUCTURE

EDUCATIONAL HUBS

- Uttara High School & College
- Rajuk Uttara Model College
- DPS STS School
- Aga Khan School Dhaka
- International Turkish Hope School Dhaka
- Sunbeam School Dhaka
- Milestone School & College
- Scholastica High School
- Shanto-Mariam University
- University of Fashion & Technology (BUFT)

HEALTHCARE

- UAMC Hospital
- Bangladesh Eye Hospital
- Ahsania Mission Cancer & General Hospital

CONVENIENCE & ENTERTAINMENT

- Bangladesh House Building Finance Corporation
- Mascot Plaza
- North Tower Shopping Complex
- Fantasy Island Amusement Park
- National Zoo
- Botanical Garden
- Bishwa Ijtema



Everyone dreams to win an abode at a place free from pollution, full of tranquility and comfortably accessible. New Heaven City is only 6 kilometers from Hazrat Shahjalal International Airport giving the project easy accessibility from any part of the city.



New Heaven City is a completely modern resort style "Five Star Residential Complex" adjacent to Sector 16, Uttara, Dhaka, Bangladesh.

It is a joint venture project of New Heaven Company of New York Inc. and Uttara Heaven Properties Bangladesh Limited.

DISCOVER
A HEAVENLY LIFE
INSPIRE
YOUR DREAMS

New Heaven City's premium residence at Uttara offers five star facilities to enjoy inspired living every day.



With a plethora of amenities aimed at giving you an ultimate experience of luxurious living, New Heaven City is just half a kilometer from the nearest Metro Rail Station. So, be closer to paradise and stay connected to any corner of Dhaka.



DISCOVER THE ART OF LUXURY LIVING

This is the first residential complex of its kind planned for development in Bangladesh by investors from the USA and Bangladesh. This complex will have all the amenities and facilities needed to be considered a "Five Star" entity under international residential and hotel standards.



GO GREEN

WITH US FOR
BETTER LIVES

A breathtaking view of the Turag river and a location away from all the noise and air pollution of the city makes this an ideal place to live.



PERFECT REJUVENATION

Whether indoor or outdoor, we have ensured that your life is packed with activities wherever you go. At New Heaven City, you will have every amenity to make the most of each day. Our club house can comfortably accommodate 500 families.



INDOOR GAMES



BBQ ZONE



OUTDOOR PLAYGROUND

CLUBHOUSE FACILITIES

New Heaven City provides you with the perfect clubhouse facilities, with a variety of sports to choose from. Most importantly, there is an incredible amount of space for the entire family to have fun and develop important family bonding and social skills.



FITNESS CENTER FOR WOMEN



SPA



WALKING TRAILS



MEDICAL FACILITIES

OUTSTANDING HOME ACTIVE LIFESTYLE

HEALTH & FITNESS

Staying healthy and fit will never be this easy! With medical facilities, 24 hours ambulance service, pharmacy, fitness center and spa, your family members can be in the prime health of their lives.



STAY SECURED 24/7

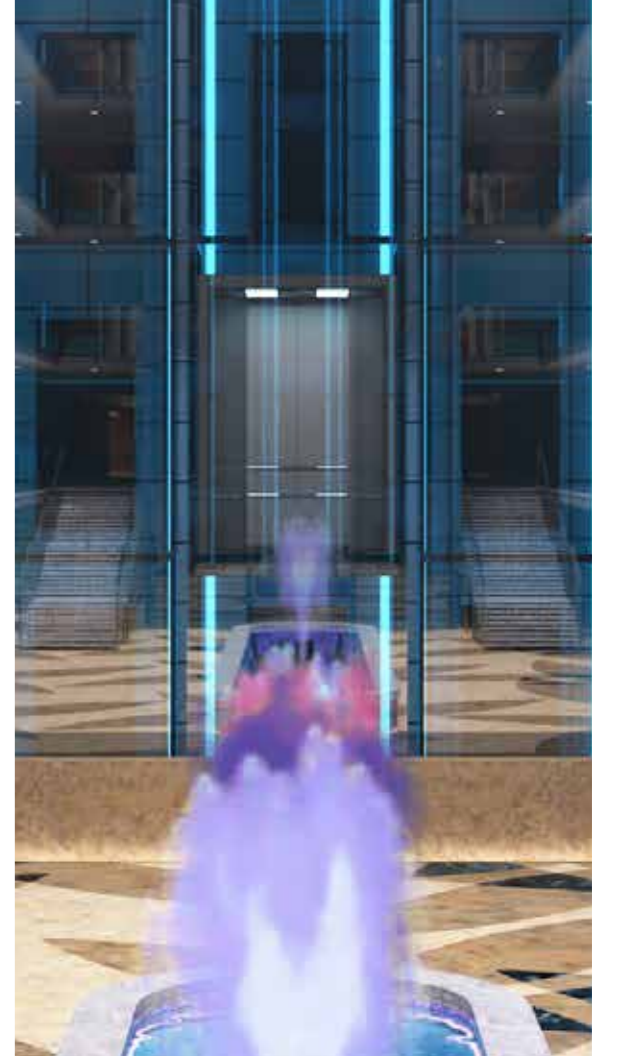
Be assured of your family's safety and well-being with the 3-tier security system at New Heaven City. CCTV surveillance system IP-based camera for real-time tracking and round the clock security service and well trained security personnel will always keep your loved ones protected.



24 HOURS CONCIERGE SERVICE



GUESTS LOUNGE



MUSICAL FOUNTAIN

A GRACIOUS AND GORGEOUS WELCOME

SMART LIVING

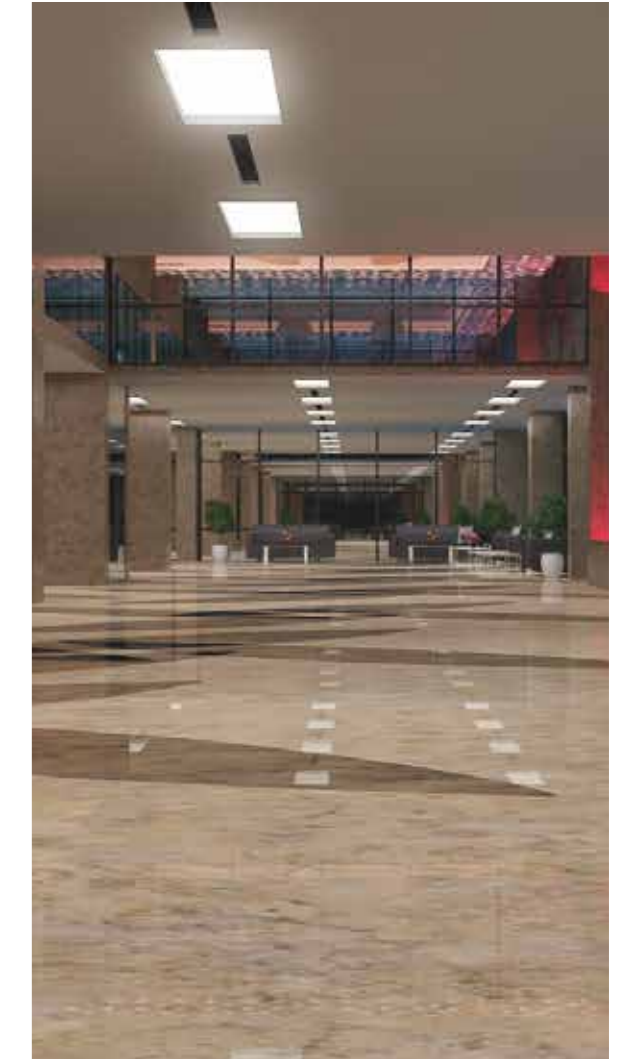
Welcome to a life that offers blissful moments, smart technology and absolute convenience to ease your daily routine. Live, work, and enjoy with your loved ones right from the comfort of your home at New Heaven City.



ROOFTOP SWIMMING POOL



BOAT CLUB



COMMUNITY SPACE

LEISURE & ENTERTAINMENT

New Heaven City gives you plenty of venues to choose from. Bask in the sun beside the pool or enjoy rooftop facilities. When you need to get some work done in the computer, centralized Wi-Fi is the perfect solution for your on-line requirements. The restaurant and community space are great places to entertain your guests. There are separate swimming pools and jacuzzis for both men and women.

ENJOY A QUALITY
LIFESTYLE
AND OUTSTANDING
CONVENIENCE
UNDER ONE ROOF



BEAUTY PARLOUR
ENJOY THE FLORAL BEAUTY



BARBER SHOP
SNIP & STYLE



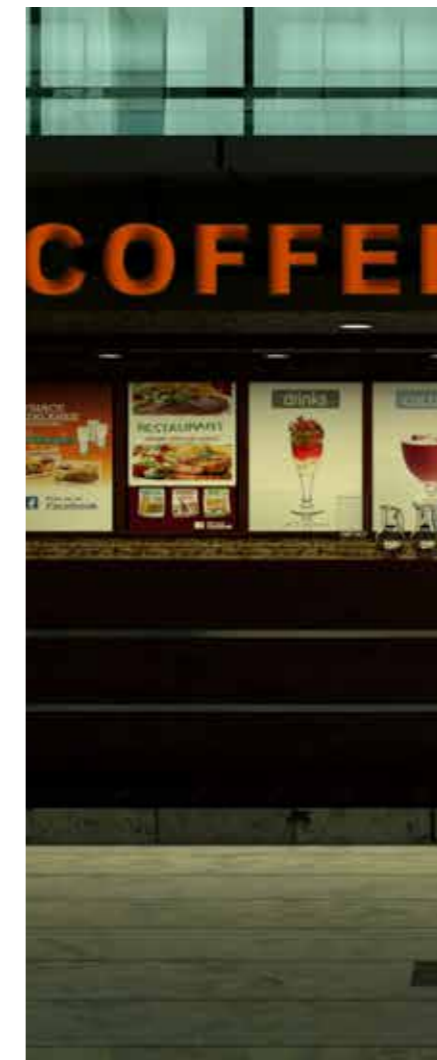
SPA
TIME TO UNWIND



ONE STOP SHOP
GRAB YOUR DAILY NEEDS WITH EASE



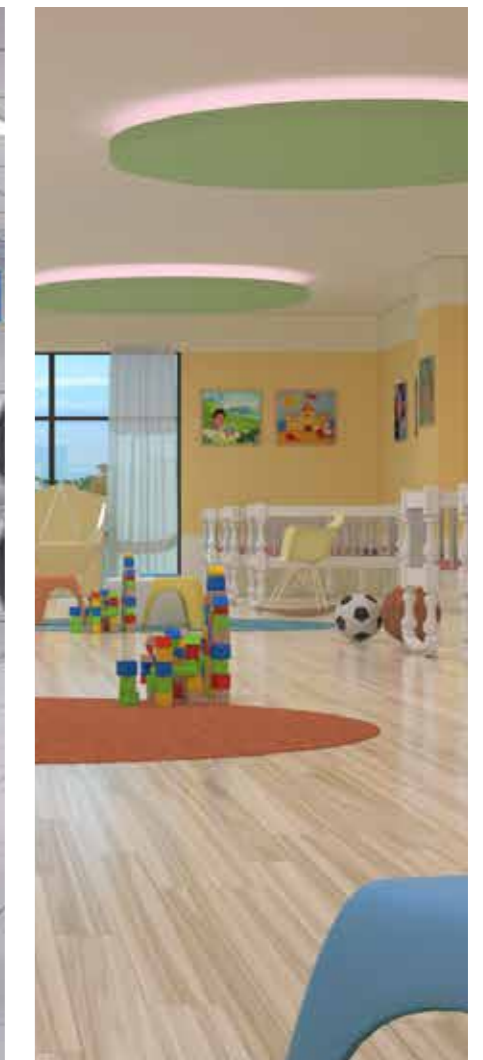
JUICE CORNER
MOVE THE HEALTHY WAY



COFFEE SHOP
CONVERSATION AND MORE



COIN LAUNDRY
FIRST EVER IN BANGLADESH



CHILD DAY CARE
HAVE FUN WITH EVERY SINGLE DAY

THERE ARE A HOST OF
LUXURIES
YOU DON'T EVEN NEED TO
LEAVE HOME FOR



MOSQUE
SEPARATE FOR MEN & WOMEN



DRY CLEANERS
KEEP YOU LOOKING GOOD



BACKUP GENERATOR
UNINTERRUPTED ELECTRICITY SUPPLY



WATER PURIFICATION PLANT
FOR QUALITY PURE WATER



SHOE SHINE
YOUR SHOE WILL GLOW EVERYDAY



ATM BOOTH
MANAGE YOUR FINANCES



PHARMACY
GOOD HEALTH IS ONLY A STOP AWAY



SHUTTLE BUS
TO METRO RAIL



SENIOR CITIZEN RECREATION CENTER
A PERFECT PLACE FOR ELDER MEN & WOMEN



PROJECT INFORMATION

Total Land Area : 3.02 Acres (1,31,882 sq. ft)
Stories : 17 Floors (3 Basements & 14 Floors)
Total no. of Apartment : 494 (2nd to 14th Floor)
Total no. of Parking Spots : 610 (3 Basement Levels)

FIVE TYPES OF UNITS

Unit Type	Gross Size (sq.ft)
A1	2030
A2	1925
A3	1870
A4	2030
E1	1700

KEY FEATURES

- This modern and appealing architecture of the complex has been designed by a rich pool of architects, engineers, entrepreneurs and real estate developers from USA and Bangladesh.
- The complex itself is a symbol of the most advanced architectural design from the modern world and first of its kind in Bangladesh.
- The complex has been planned with both urban and rural elements.
- It has all the facilities and amenities to optimize total safety and convenience of its residents.
- Its breathtaking view of the river, location away from all the noise and air pollution of the city makes this an ideal place to live.
- Central water purification plant to provide mineral water quality pure water supply for drinking, bathing, cooking, cleaning throughout the complex. It eliminates need for bottled water or individual water treatment system in the apartment.
- Air conditioning and heating systems will be supplied by a modern and efficient heating, ventilation and air conditioning (HVAC) system in each apartment.
- Generators are able to supply 100% of complex's electricity in the event of power-cut.



AUTOMATIC CAR WASH



VISITOR PARKING



3 STORIED CAR PARKING

PARK IN STYLE

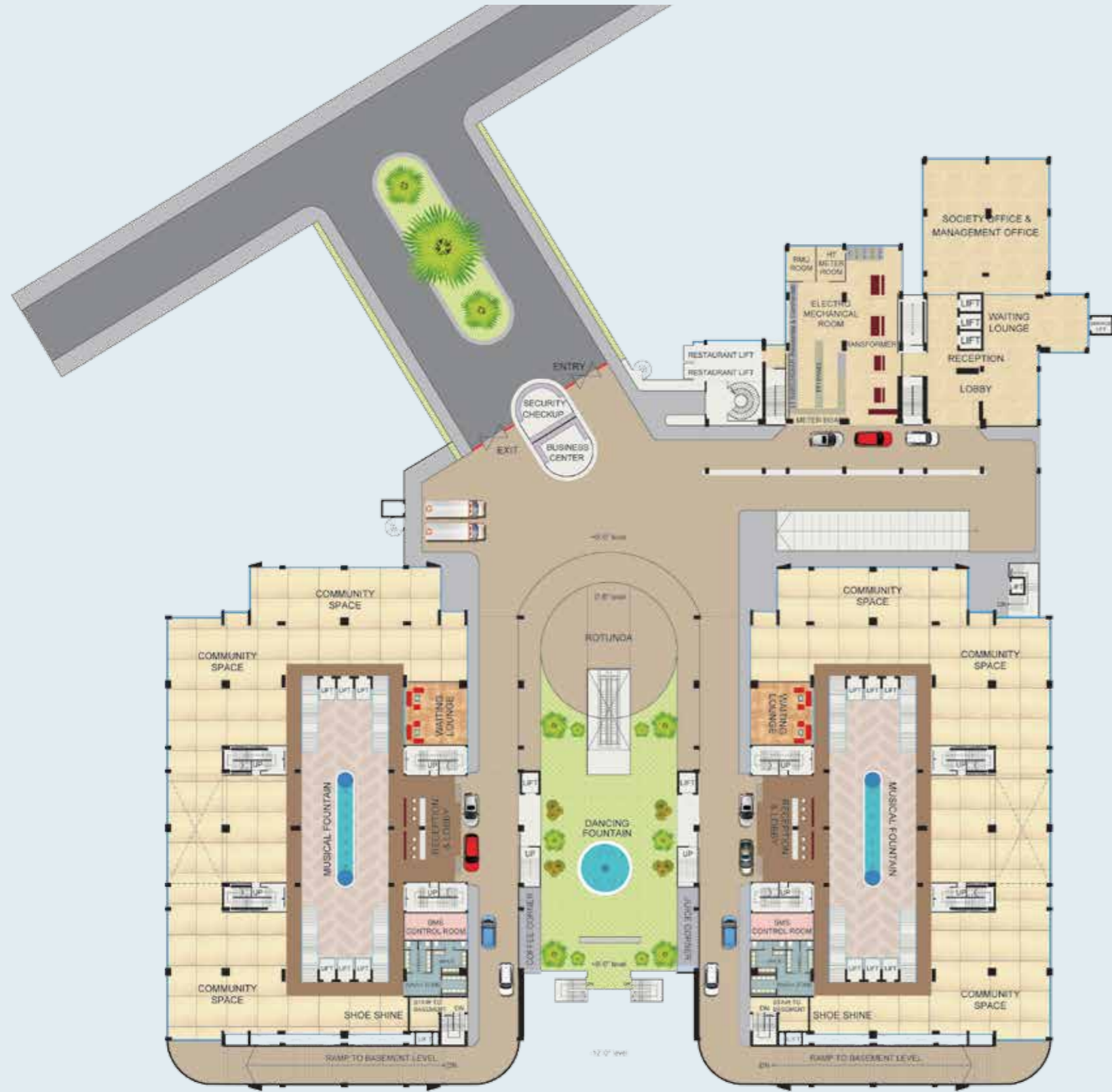
Total 2,83,218 sq. ft. of 3 levels of basement will be utilized for 610 car parking for residents and visitors. Other services include one stop shop, automatic car wash, driver's rest area, utility control rooms and loading dock.



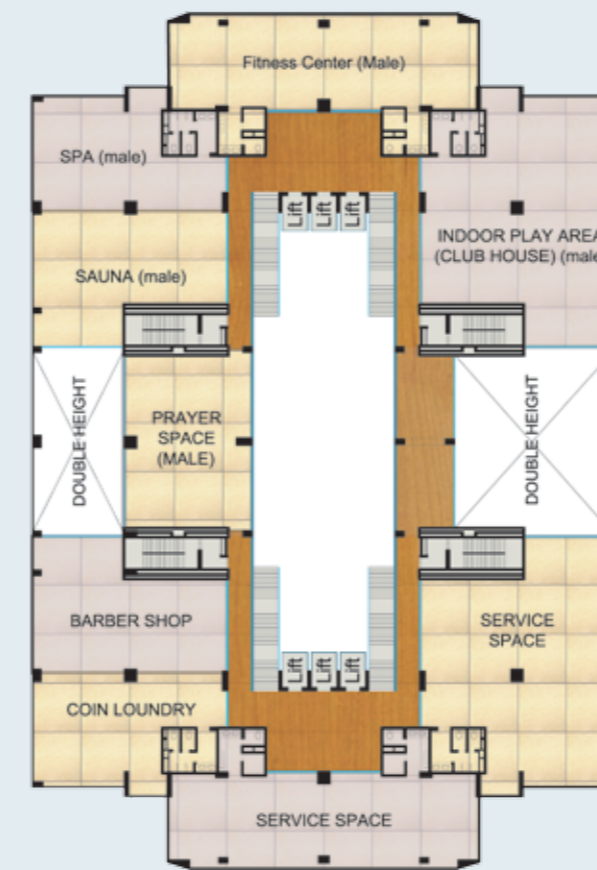


FLOOR PLANS

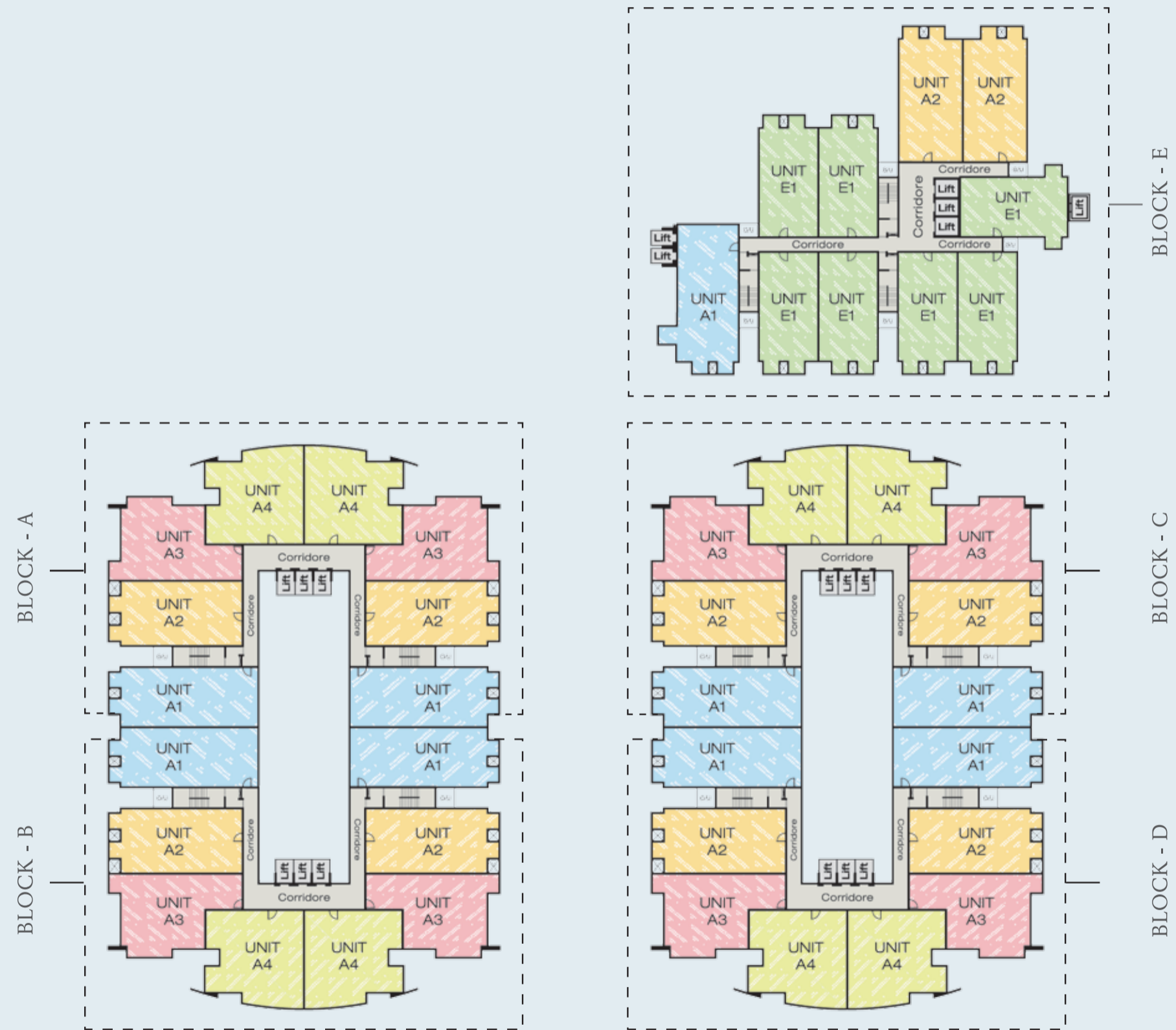
FLOOR PLAN GROUND FLOOR



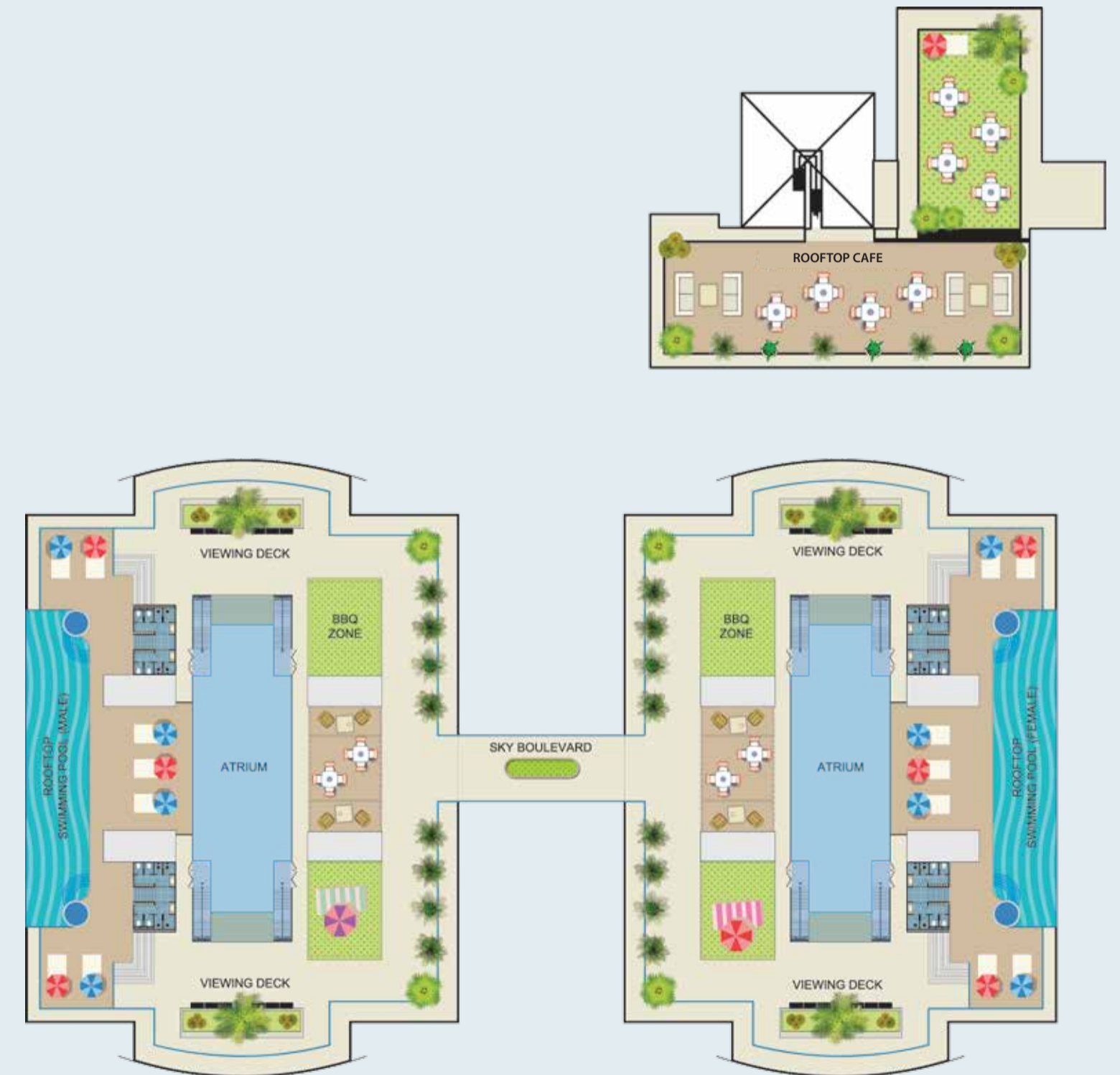
FLOOR PLAN 1ST FLOOR



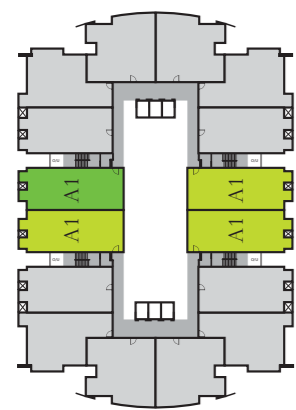
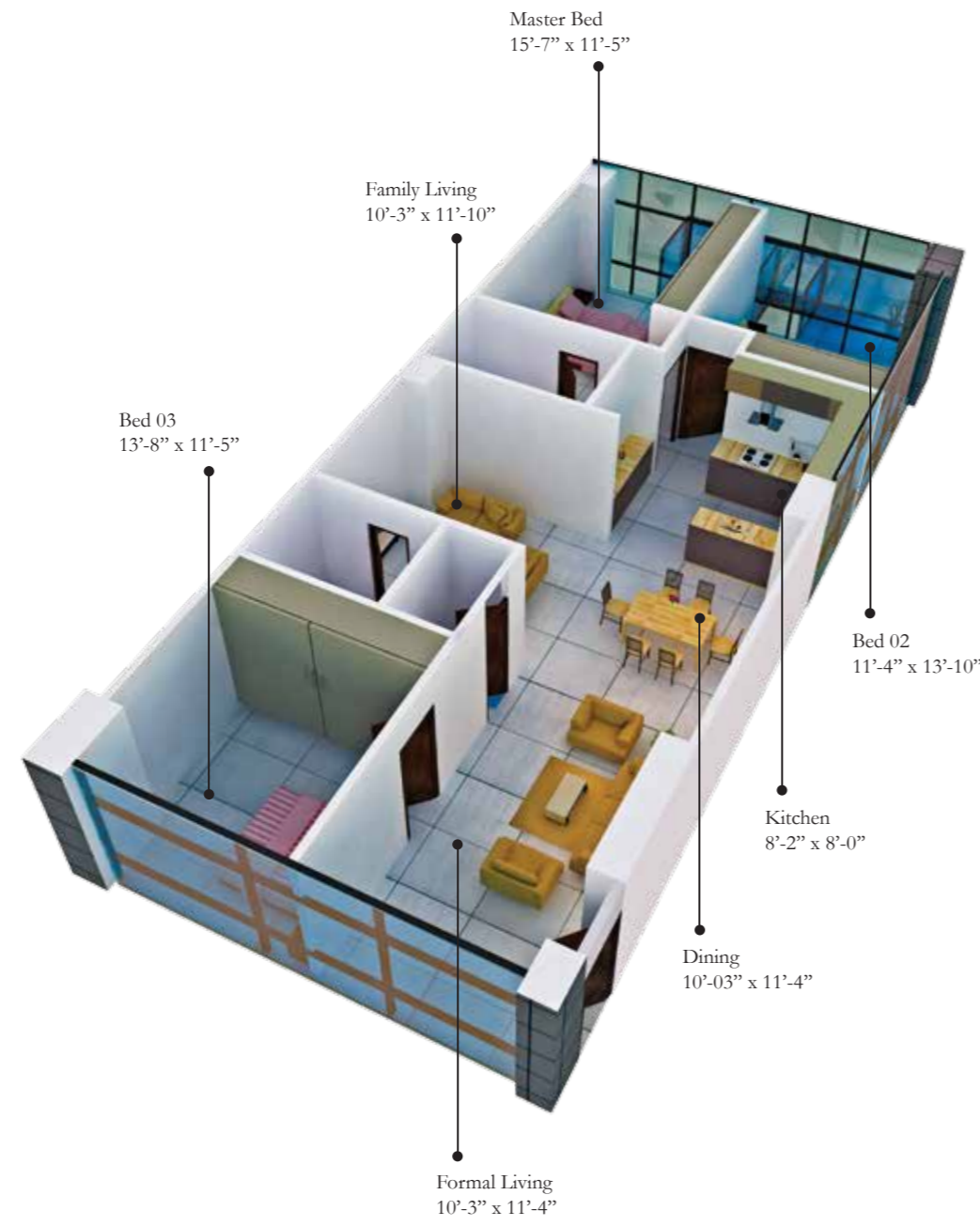
FLOOR PLAN 2ND-13TH FLOOR



FLOOR PLAN ROOFTOP FLOOR



UNIT TYPE
A1-2030 SQ FT

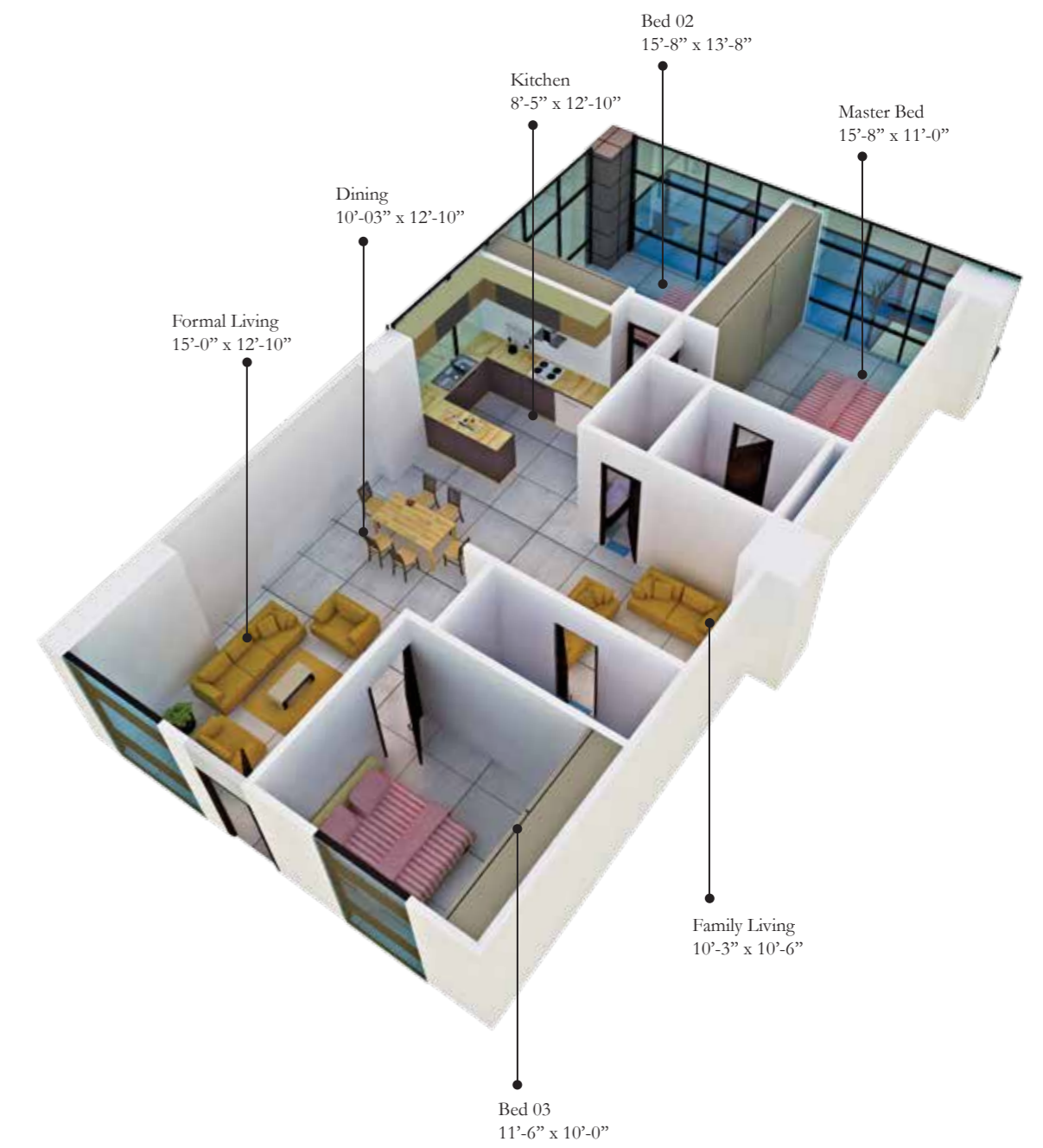
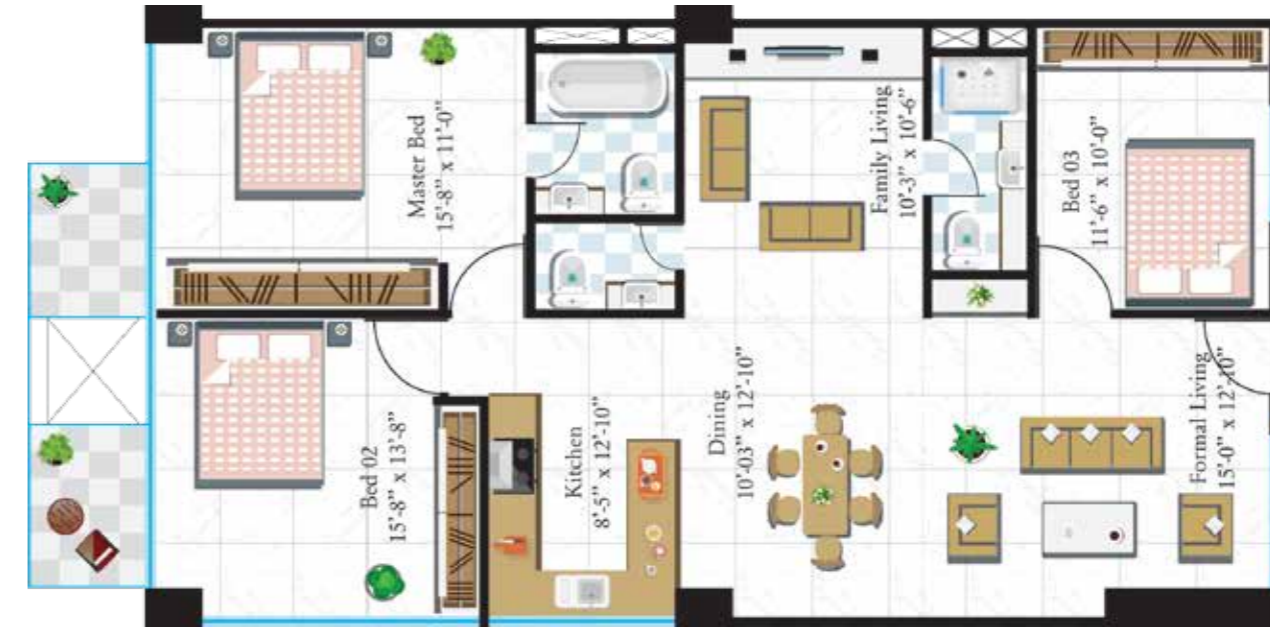


FEATURES:

- ▶ BEDROOMS - 03
- ▶ FORMAL LIVING - 01
- ▶ FAMILY LIVING - 01
- ▶ DINING - 01
- ▶ KITCHEN - 01
- ▶ BATHROOMS - 02
- ▶ POWDER ROOM - 01
- ▶ BALCONIES - 02



UNIT TYPE
A2-1925 SQ FT

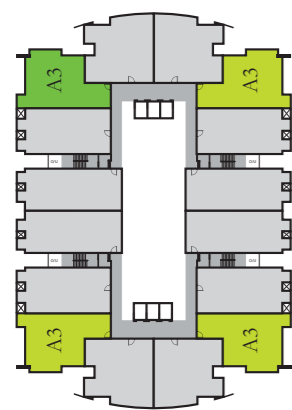
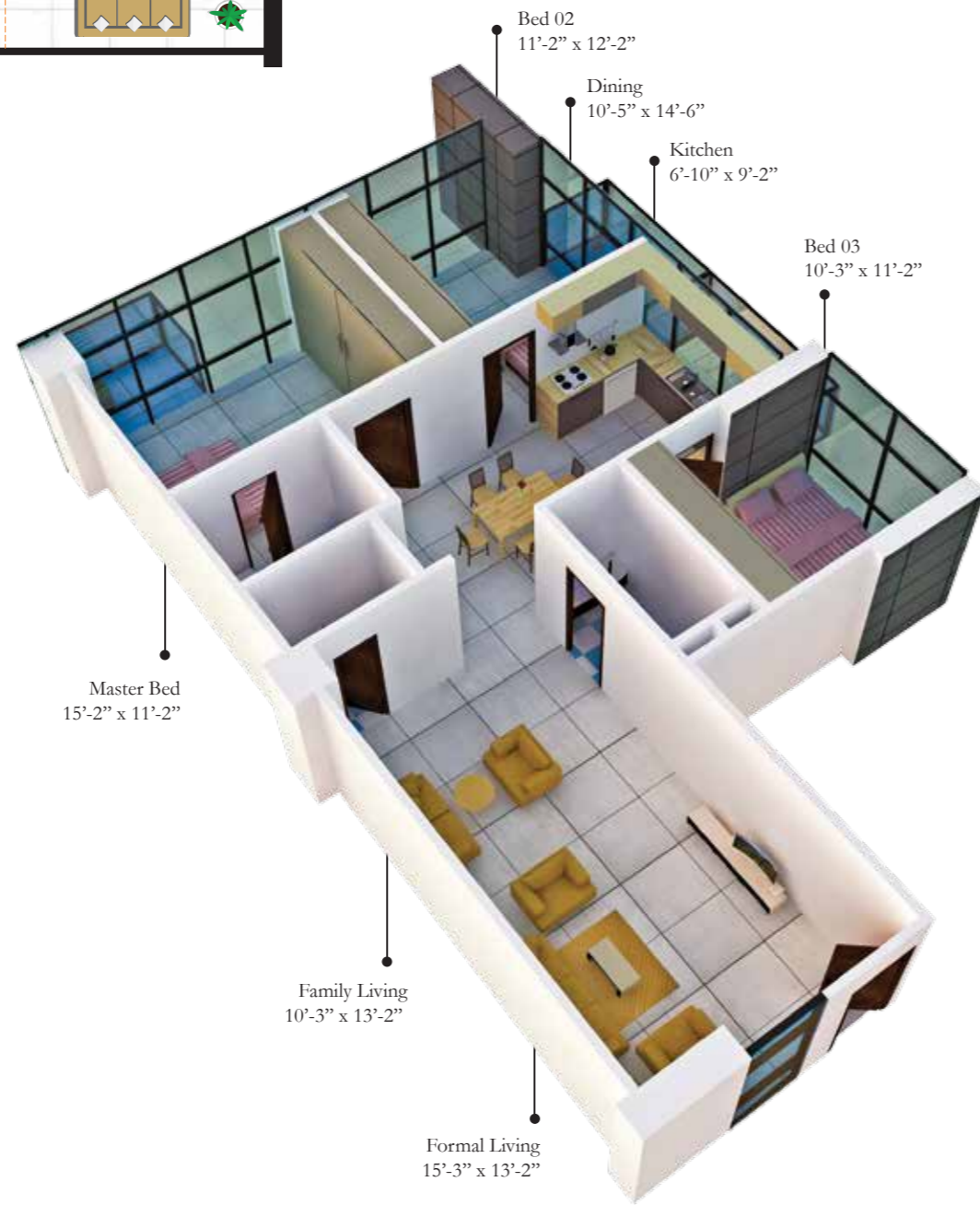
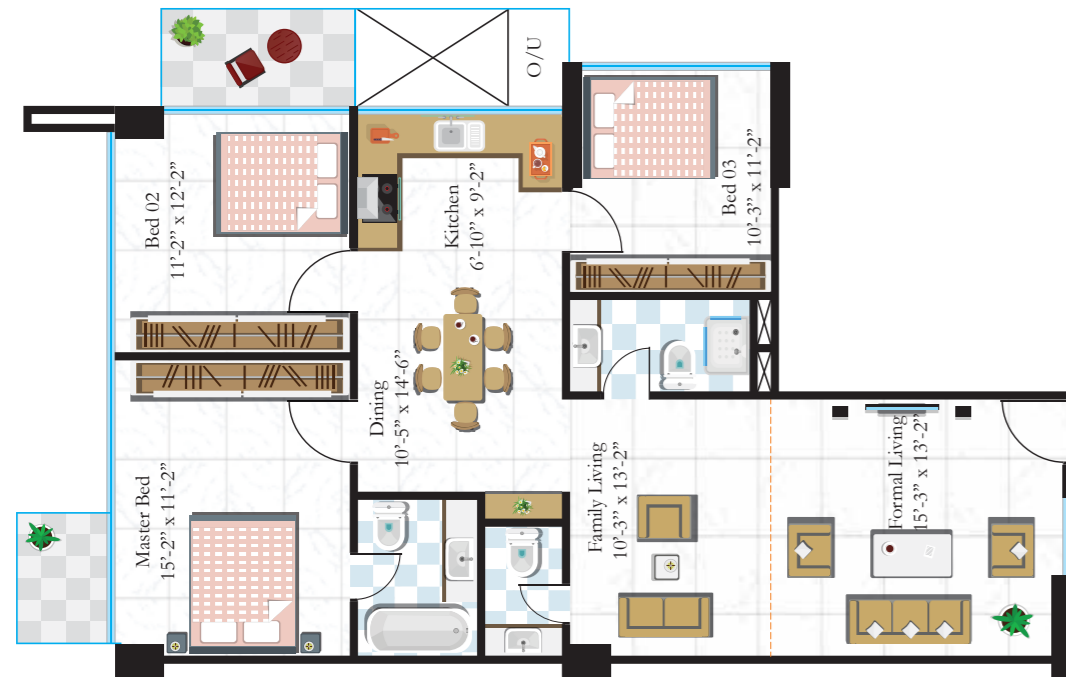


FEATURES:

- ▶ BEDROOMS - 03
- ▶ FORMAL LIVING - 01
- ▶ FAMILY LIVING - 01
- ▶ DINING - 01
- ▶ KITCHEN - 01
- ▶ BATHROOMS - 02
- ▶ POWDER ROOM - 01
- ▶ BALCONIES - 02



UNIT TYPE
A3-1870 SQ FT

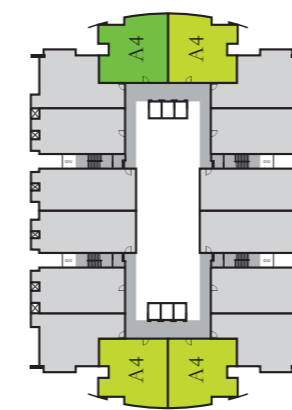
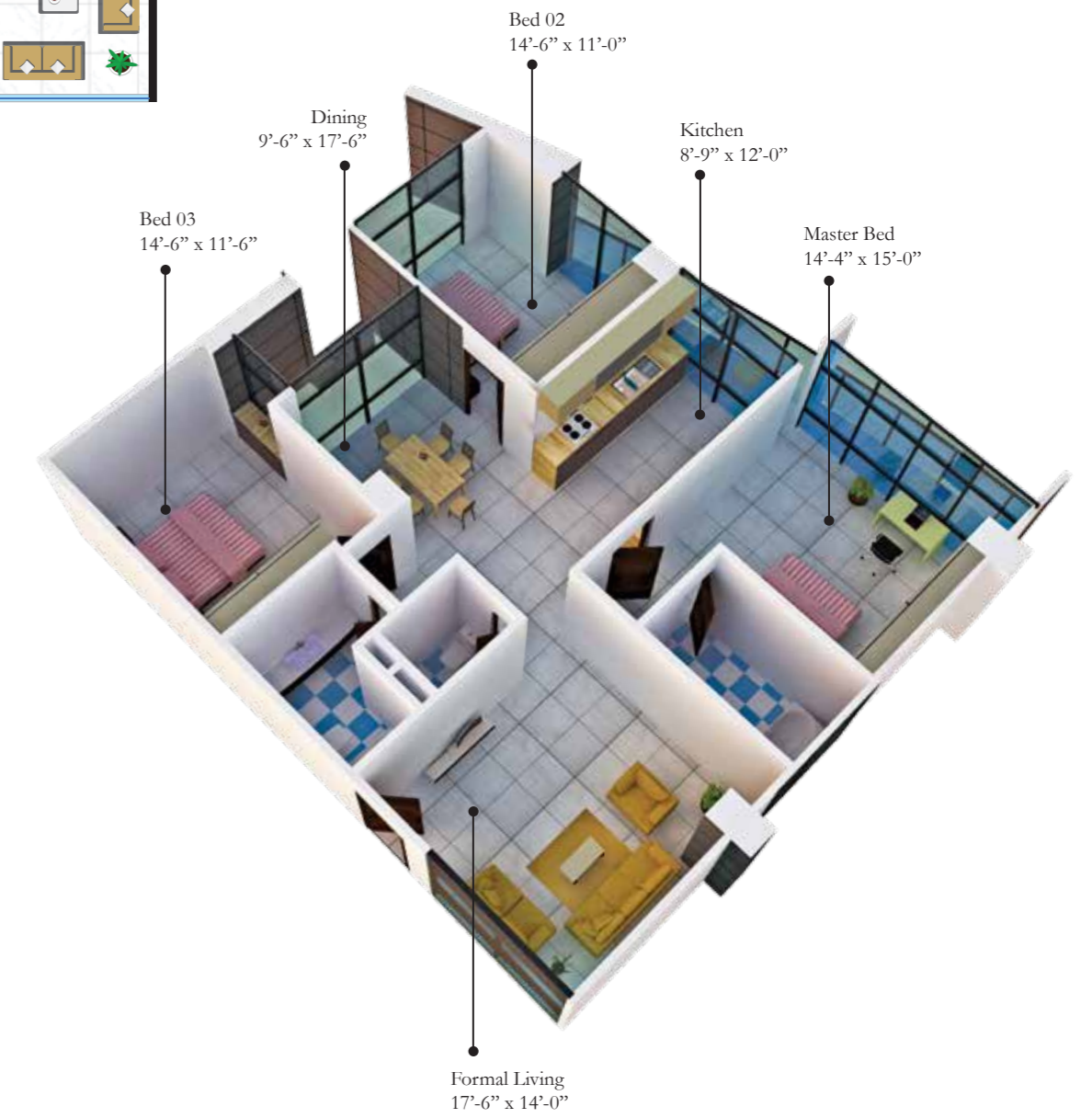
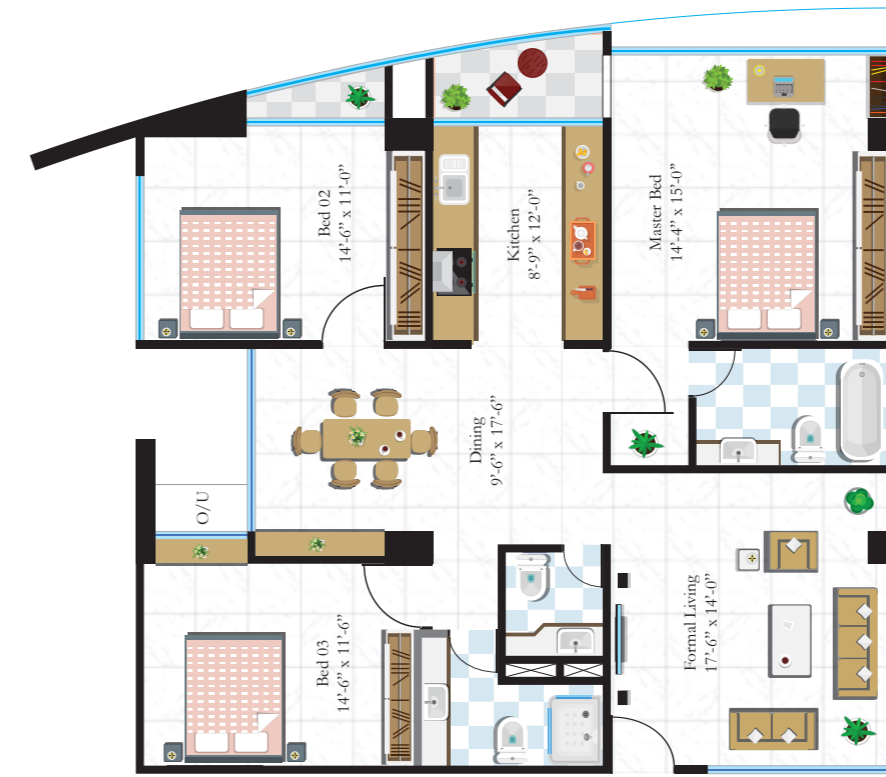


FEATURES:

- ▶ BEDROOMS - 03
- ▶ FORMAL LIVING - 01
- ▶ FAMILY LIVING - 01
- ▶ DINING - 01
- ▶ KITCHEN - 01
- ▶ BATHROOMS - 02
- ▶ POWDER ROOM - 01
- ▶ BALCONIES - 02



UNIT TYPE
A4-2030 SQ FT

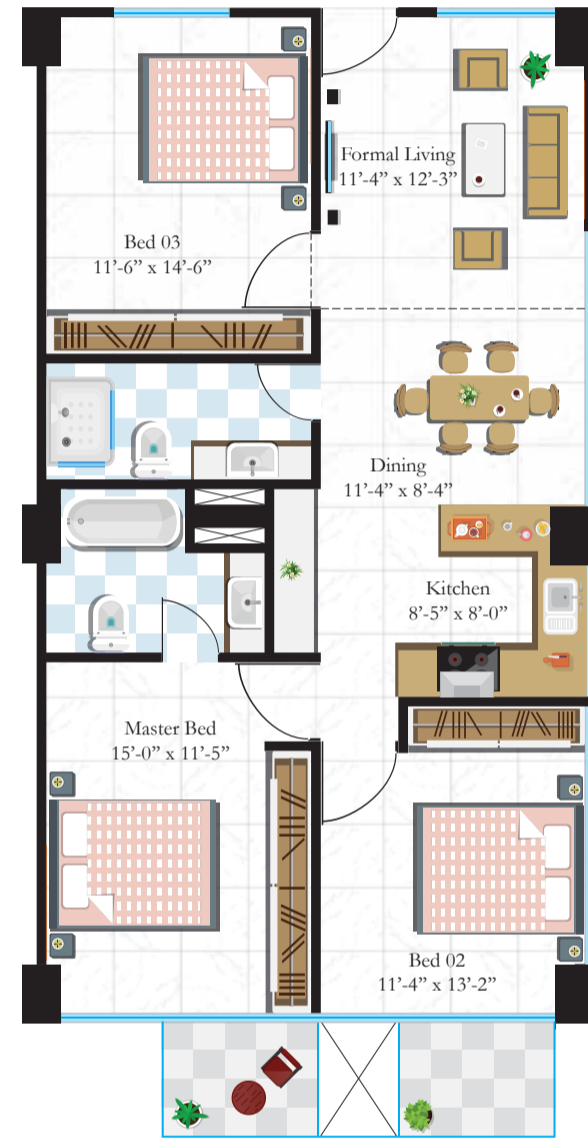
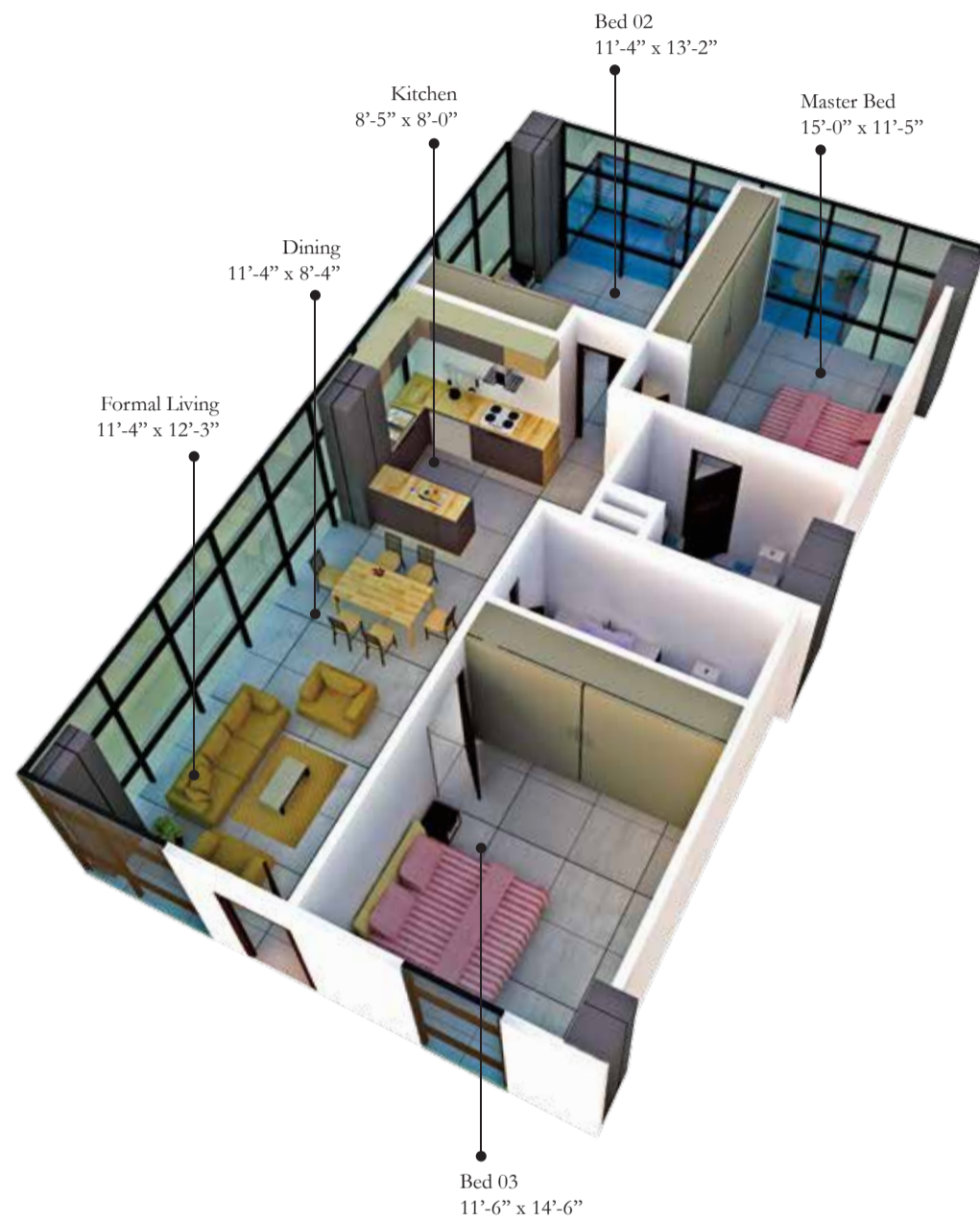


FEATURES:

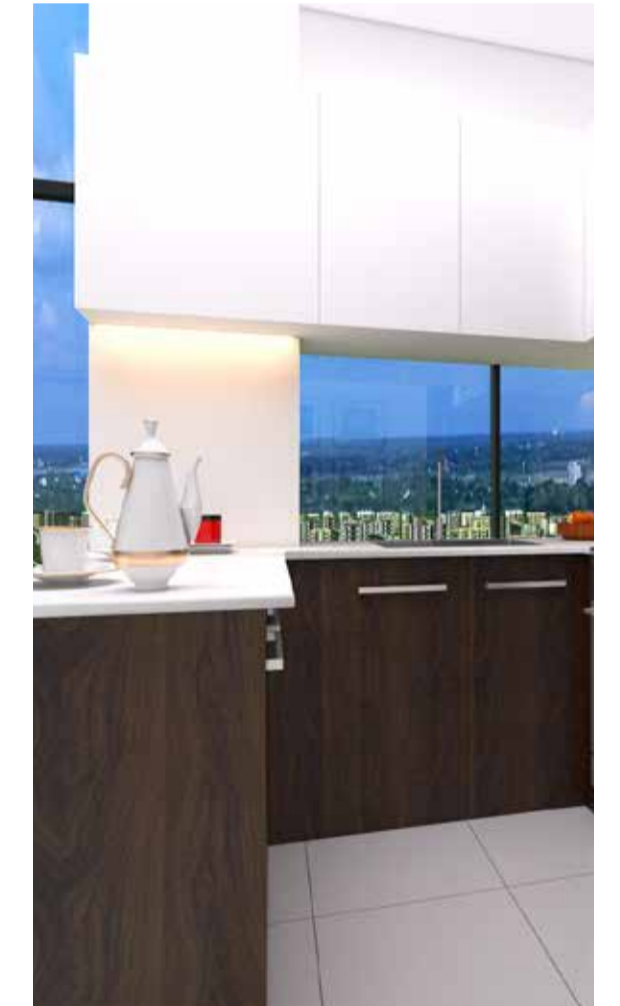
- ▶ BEDROOMS - 03
- ▶ FORMAL LIVING - 01
- ▶ DINING - 01
- ▶ KITCHEN - 01
- ▶ BATHROOMS - 02
- ▶ POWDER ROOM - 01
- ▶ BALCONIES - 02



UNIT TYPE
E1-1700 SQ FT



COMFORT
CALLING
YOU



FEATURES:

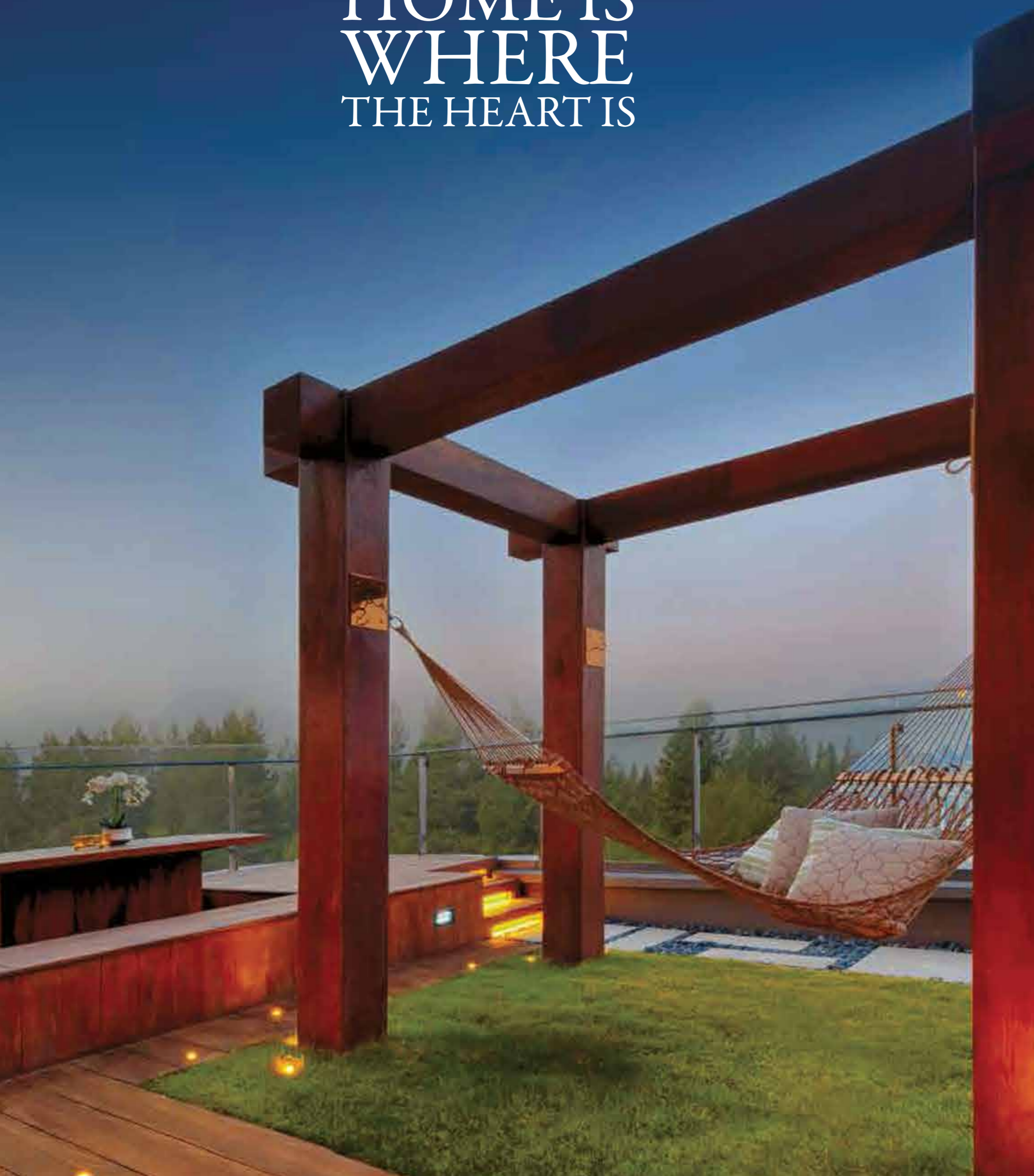
- ▶ BEDROOMS - 03
- ▶ FORMAL LIVING - 01
- ▶ DINING - 01
- ▶ KITCHEN - 01
- ▶ BATHROOMS - 02
- ▶ POWDER ROOM - 01
- ▶ BALCONIES - 02





NEW
HEAVEN
CITY

HOME IS
WHERE
THE HEART IS



ROOFTOP EXPERIENCES

Open yourself to experiences that enthrall you, an illuminated sky that inspires you, and activities that energize you.



STAR GAZING DECK
For the wonders of the universe



BARBEQUE AREA WITH SEATING
Grills and sizzle when you desire



SOCIALIZING AREA WITH HAMMOCKS
Rest at its best



ACUPRESSURE PATHWAY
The point of perfect cure



DRY LANDSCAPING
The pristine cover of nature



ROOFTOP GARDEN
Breathe in the freshness



SWIMMING POOL
Have fun with every splash



SKY WALK
For a delightful walk

RELAXED LIFESTYLE

At New Heaven City, your comfort and ease are our priority. It has elegant interiors, thoughtful landscapes, or your private balcony. Each aspect makes you and your loved one cherish every single moment.



LUXURIOUS INTERIOR

A home at New Heaven City brings you both elegance and functionality. Tastefully imported tile-flooring adorns your spacious living room, while a chic modular kitchen helps you to create a feast for your family.

Air-conditioning makes each room a heaven of comfort.

New Heaven City is where you will celebrate all of life's grand moments in great style.



LIST OF AMENITIES



24 HOUR SECURITY AND RECEPTION



24 HOUR REPAIR SERVICES



SWIMMING POOL (MALE & FEMALE)



CLUB HOUSE



24 HOURS CONCIERGE SERVICE



SHUTTLE BUS SERVICES



SPA



BOAT CLUB



ADVANCE FIRE CONTROL SYSTEM



HOUSE KEEPING/ MAID SERVICES



PLAYGROUND



WALKING TRAILS



WIFI THROUGHOUT THE COMPLEX



MOSQUE (MALE & FEMALE)



INDOOR GAMES



INTERCOM CONNECTION



24 HOUR FULL POWER BACKUP GENERATOR



FITNESS CENTER (MALE & FEMALE)



CAR WASH



CENTRAL WATER PURIFICATION PLANT



ONE STOP SHOP



MEDICAL CENTER



SHOE SHINE



COFFEE SHOP



LADIES AND GENT'S SUPER SHOP



PHARMACY



BARBER SHOP (MALE)



JUICE CORNER



ROOFTOP CAFÉ



AMBULANCE SERVICE



PARLOR (FEMALE)



PARTY HALL



CENTRAL LIBRARY



COIN LAUNDRY



CHILD DAY CARE



RESTAURANT & CATERING SERVICE



ATM



DRY CLEANER



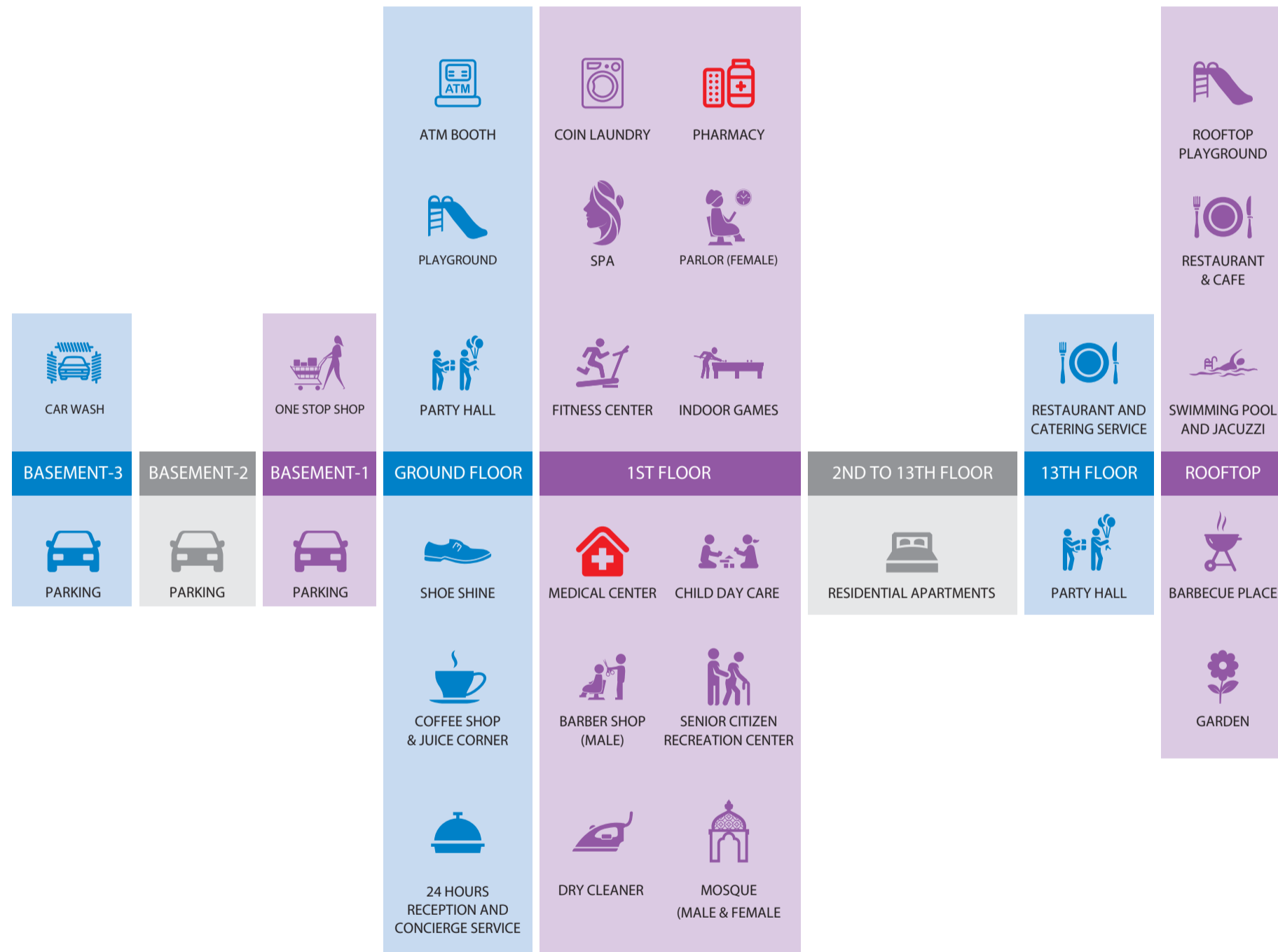
SENIOR CITIZEN RECREATION CENTER



GRAVEYARD

AMENITIES

DISTRIBUTION BY FLOOR



DISCOVER



24 HOURS FULL POWER BACKUP GENERATOR

Normally there are no drastic consequences from interruption of power supply.



RAIN WATER HARVESTING

This simple system will help to save more natural water for future use.



HOT WATER SUPPLY IN THE KITCHEN

This little change will go beyond saving electricity.



HEALTH-SAFE PAINTS AND ADHESIVES

Low Volatile Organic Compound (VOC) paints, adhesives and products are used for your comfort and to minimize health hazards.



RAMPS FOR PEOPLE WITH SPECIAL NEEDS

New Heaven City has an inclusive environment, which means that no one will ever feel left out.



MAXIMUM NATURAL DAYLIGHT AND CONSERVATION OF ENERGY

Our low eArgon, double layered, double glaze glass wall and door will provide you with better lighting, prevent heat radiation and loss resulting in reduced electricity consumption.



ABSOLUTE SAFETY AND PEACE OF MIND

With a number of security features such as boom barriers, vehicle check, CCTV'S for all common areas and 24/7 security personnels, we are dedicated to ensuring that you and your loved ones are always safe.



PURE DRINKING WATER SUPPLY RECYCLING OF WATER

Central water purification plant to provide mineral water quality pure water supply for drinking, bathing, cooking, cleaning throughout the complex.



ENJOY
THE VIEWS OF
NATURE
AND A BUSY
DELIGHTFUL CITY

NEW HEAVEN CITY



ATRIUM



MUSICAL FOUNTAIN

COMPLEX FEATURES

- The entire complex will be constructed on 3.02 Acres (1,31,882 sq. ft) of land. 50% of this area will be open space comprising of parks and playgrounds. Residential buildings will be constructed on the remaining 50% of the land.
- One of the most attractive parts of the complex is the ground floor of each building. In total, they will have more than 50,000 sq. ft. of air conditioned open arcadia with garden, dancing fountain water body, reception, sitting area and other attractions for residents and visitors. These open air conditioned areas can be used for Jummah Prayer, Eid Jamat, wedding or large gathering and other social events.
- 1st floor has more then 50,000 sq. ft of common area and commercial facilities are spread across the 3 buildings.
- Rooftop facilities (more than 65,000 sq. ft area) are for common usage of residents such as playground, walking trail, swimming pool, sky boulevard and barbeques. It also has very attractive roof top café and party place for social events for the residents.
- Total 2,83,218 sq. ft. of 3 levels of basement will be utilized for 610 car parking and other services such as one stop shop, automatic car wash, driver's rest area and utility control rooms and loading dock.

SPECIFICATIONS

MAIN ENTRANCE DOOR

- Solid wood door with key card access

STRUCTURE

- 3 Basements + Ground + 13 storied RCC structure

OUTSIDE WALL

- Double layer, double glaze, low E Argon tempered glass & framing

CAR PARKING

- Dedicated car parking in basement levels

FOYER / LIVING / DINING

- Superior quality vitrified tile flooring and skirting
- Plastic emulsion paint for walls and ceiling

BEDROOMS

- Superior quality vitrified tile flooring and skirting
- Plastic emulsion paint for walls and ceiling
- All cabinet's, closets and shelves are included in all bedrooms.

TOILETS

- Superior quality non-skid ceramic tile flooring
- Superior quality ceramic wall tiling up to false ceiling
- False ceiling with grid panels
- Vanity counter in all toilets
- Granite vanity top

COMMON AREAS

- Ceramic tile/ vitrified tile flooring
- Superior quality ceramic tile cladding up to ceiling
- Plastic emulsion for ceiling

JOINERY BEDROOM DOORS

- Frame - timber
- Architrave - timber
- Shutters - with both side masonite skin

TOILET DOORS

- Frame - timber
- Architrave - timber
- Shutters - with outside masonite and inside laminate
- All other external doors to be manufactured in specially designed aluminium extruded frames and shutters with panels
- Heavy-duty aluminium glazed sliding windows made from specially designed and manufactured sections

KITCHEN

- All kitchen appliances such as built in family size refrigerator, built in dishwasher, microwave oven, kitchen exhaust, sink, cabinet.
- Superior quality tile flooring
- Superior quality ceramic tiling in the wall.
- Plastic emulsion paint for ceiling
- Granite table top

BALCONIES/ UTILITIES

- Superior quality non-skid ceramic tile flooring and skirting
- Glass railing with stainless steel frame as per design
- Plastic emulsion paint for ceiling
- All walls painted in textured paint

STAIRCASE FIRE EXIT STAIRCASE

- Concrete treads & risers
- Textured paint for walls
- Plastic emulsion paint for ceiling
- GS handrail
- Advanced fire suppression and sprinkler system
- Fire extinguisher, water pipe and hose for fire suppression

LIFTS

- 3 Large size, card control clear glass capsule lift in each block.
- 2 Escalators in ground floor
- Total 24 stretcher size lift in entire complex

LANDSCAPE

- Bird nest
- Children's play area
- Fish pool
- Orchid corner
- Sand pool
- Fountain

COMMON FACILITIES

- Well-equipped common clubhouse

PLUMBING & SANITARY

- Sanitary fixtures of reputed make in all toilets
- Chromium plated fittings of reputed make in all toilets

ELECTRICAL WORKS

- Heating, ventilation, and air conditioning (HVAC) system for all apartments
- Standby backup power supply upto 100% for all apartment's
- Exhaust fans in kitchen and toilets
- Television points in living and all bedroom
- Telephone points in living and all bedroom
- Intercom facility from security control center to each apartment
- Central wifi system in entire complex

CONSTRUCTION FEATURES

The entire construction will be managed and supervised by a large project management team which will consist of nationally and internationally trained architects and engineers from a variety of disciplines. The project management team will have a combined expertise of more than two hundred years of building construction experience.

- This facility has been designed by renowned architects and engineers. Structural design will be rendered considering all kinds of loads (wind loads, earthquakes, vertical loads etc.) as per BNBC. Fenestrations will be designed to sustain up to 220 miles/hour wind load.
- In order to maximize beauty and access to natural light and minimize the weight of the building the complex will use mostly glass in its walls, windows and balcony doors. These glass walls are double layered Low Emission Argon glass that are one way see through. These features has been used in most glass walls throughout the western world. Low Emission Argon glass walls prevent heat radiation from inside out and vice versa, which allows residents to control their apartment temperature very easily. It also reduces noise and usage of electricity in lighting, heating and cooling.
- Each individual apartment will have energy efficient HVAC units for cooling and heating. Developer will supply energy efficient appliances for every single apartment. Appliances include refrigerators/freezers, dishwashers, induction electric stoves and high powered exhaust systems in the kitchen & toilets. Due to the limited gas supply in Bangladesh and to reduce the emission and increase the fire safety of the apartment, this induction electric stove will be a modern addition. Complex will generate 10% or more of its utilized electricity from solar power system.
- Developer has followed national and international standards, regulations and codes of fire safety during the design of the complex. The developer is completely committed to adhere to the same standards during the construction and post construction periods. This developer is committed to have the 100% compliance with all safety regulations including intelligent fire detection and sprinkle system in New Heaven City. They are committed to construct New Heaven City complex at Dhaka in high standard and in compliance with the fire department, transportation authority, traffic, environment and other safety agencies.
- Safety and security of the residents are of paramount importance to the project owners and developers. There will be well trained security personnel stationed across the complex, who will be monitoring the complex 24 hours a day with close circuit monitoring cameras. There will be a body scan and bag scan for all visitors. Residents will have an ID swipe. All housekeepers, maidservants, and drivers will have separate entry and exit points for their security checks.
- Water purification plant to provide safe mineral water quality pure water supply for drinking, bathing, cooking and cleaning.
- Full power supply with backup generator during power-cut.

TERMS & CONDITION'S

Terms & Conditions of Contract and Mode of Payment:

30% of the total value of the apartment (Booking Money) has to be made at the time of booking an apartment.

The other 70% will be divided into equal monthly installments to be paid as per stipulated in the schedule mentioned in the provisional agreement to be signed by both the parties. Detail terms and conditions will be provided during contract execution.

Special discount for full payment.

Builders' Rights

The builders reserve the right to accept or reject any or all applications for allotment without assigning any reasons to anyone.

The builders also reserve the right to make any changes in architectural and/or structural design of the projects as and when required. Limited changes can also be made in specifications for the greater interest of making the project better.

- All renderings contained in this brochure are artist's impressions only.
- All area measurements mentioned are approximate.
- Apartment size are gross and inclusive of common facilities.

ARCHITECT AND ENGINEERING TEAM

<p>Mirza Shahper Jalil Architect Mirza Shahper Jalil is Managing Director and Principal Designer of SAIUJ CONSULTANTS, an architectural, interior and exterior design firm located in Dhaka, Bangladesh. Mirza is a graduate of Rostov State Architectural Institute, Russian Federation, where he received a B.Sc. in Arch. Later he received his M. Arch from the same institute.</p> <p>After M. Arch, Mirza launched his career in Dhaka, where he began his specialization in residential and commercial building design. Simultaneously he expended his skills in interior design of different categories of building that eventually led to an 8 years of consultancy with Bangladesh Power Development Board (BPDB) as Architect Consultant (Superintendent Engineer).</p> <p>In this capacity he designed master plans of several power plants, office and residential building, interior of offices, renovation work of different old buildings etc. Recently he designed number of residential and commercial buildings, interior design of private residences and commercial building as well as in Govt. Sector.</p>	<p>Shamsul Alam Structural Engineer Principal Structural Designer. GRID SHELL.</p> <p>Address: House# 146 (1st Floor) Probhatibag, Zone -A, Khilgaon Dhaka-1219, Bangladesh</p>
<p>Mirza Shahper Jalil Architect SAIUJ CONSULTANTS Address: 165/3, Green Road, Narikelbag Ground Floor, Dhaka-1205 E-mail: shahpermj07@gmail.com Contact number: 01711540138</p>	<p>Md. Alinur Rahman. PEng. Chief Executive and Senior Electrical Designer PLAMEX Engineers, Planners & Consultants.</p> <p>Address: House# 25, Road# 01, Dhanmondi R/A, Dhaka-1205, Bangladesh E-mail: alinur5678@gmail.com Contact number: 01711112546, 01913784992 E-mail: sabdgn@gmail.com Contact number: 01552488306, 0175078789</p> <p>Mohammad Anisur Rahman Water Supply Sewerage and Sanitary Engineer Managing Partner FRAME WORK Engineers and Associates</p> <p>Address: House# 19/B (1st floor) Lakecircus, Kalabagan Dhaka-1205, Bangladesh E-mail: anisur27@yahoo.com Contact number: 01716894227</p>

WELCOME FROM THE PRESIDENT

As a senior medical scientist, I have made numerous contributions in medical research and drug development for the last 27 years. I have worked as a professor, manager, director, and vice president of many medical centers and hospitals in the United States and Bangladesh. I have established many new business entities for the medical institutes throughout New York and New Jersey area. As a clinical research scientist, I have experience in the management of clinical trials at both national and international levels. I have substantial contributions during the conduct and management of numerous industry sponsored, NIH and investigator initiated clinical research studies.

As an entrepreneur I have been actively involved in over a dozen businesses in the US and Bangladesh. I have build a strong management team for these operations and guide the management team to grow and develop these businesses.

I have visited many countries in the world, especially in Latin America, USA, Europe and Asia. During my visits I have resided at most modern resorts and residential complexes in the world. I had opportunity to understand and observe the operations of all those facilities. I also enjoyed convenience of all the amenities and services of all those modern complexes.

Over the last 10 years, I have been traveling to Bangladesh quite frequently for both professional and personal reasons. During my visits, I have caught up with family and friends, some of whom live in beautiful houses and apartments in some of the most expensive parts of Dhaka. However, even with those advantageous circumstances, there are still major issues with security, amenities and services. No matter how expensive an apartment or complex in Dhaka is, its residents still feel unsafe. People also will consistently have to deal with the effects of power failures and load sheds. Most residents also carry bottled water or install water filtration system due to concerns around purification. There are no recreational facilities, fitness centers, pools, mosques for women, child care centers, adult care facilities, or medical care facilities inside the residential complexes or apartments. In Bangladesh, most apartments/complexes are quite unsophisticated. They do not have many amenities and services considered essential by modern apartment complexes elsewhere in the world.

As an entrepreneur I wanted to extend my experience and financial support for the development of "all in one" modern residential facility in Bangladesh.

Five years ago I began planning to develop the most modern residential complex in Bangladesh, where complex will offer all the safety, security, amenities and services of the modern world blended with my beloved Bangladeshi culture. The joint efforts of architects, engineers, contractors and advisors have led them to visit and observe residential complexes across different countries and finalize the design of this most modern "Five Star" residential complex, "New Heaven City". It will be an iconic project for Bangladesh, providing people with a beautiful place to live while increasing our national esteem.

We are going to build separate fitness centers, swimming pools and mosques for men and women to accommodate our cultural and religious observances. We are installing a water purification plant to service the entire complex and supply mineral water quality pure water for drinking, cooking and cleaning. We will have full power supply in all the apartments in the event of power failure or load shed.

I lost my mother to medical illness at her apartment before there was a chance to take her to the hospital. To that end, we will have a fully staffed urgent care center on the premises such that no one has to go through this experience. Patients will be stabilized by our well trained nurses and physicians. They will be sent to secondary or tertiary hospital for extended care after their medical condition becomes stable.

Finally, to ensure our residents' safety and comfort, New Heaven City will have three layers of safety and security measures around the clock.

We will build this city in such a way and so full of comfort that we hope residents will feel "CLOSER TO PARADISE AND THE PLACE YOU CALL HOME".

(SIGNATURE)

DR. JAKY PATWARI
(PRESIDENT & CEO)
NEW HEAVEN CITY